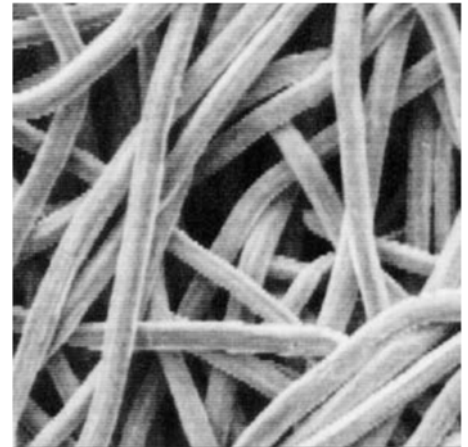


FILTERONE

Pleated filter media of sintered fiber in 316L

Filtration grade: from 0.5 to 5 microns

Prefiltration and polishing of pharmaceutical, biological, chemical, solvents, perfumes, mouthwashes, creams, polymers, paints, inks, water, wine, beer, vinegar, drinks, oils.



FILTERONE: 316L stainless steel sintered microfibre filter septum

PRODUCT INFORMATION

The FilterONE cartridges are constructed with a 316L stainless steel sintered microfibre filter septum with 2 internal support layers, 1 external protection layer and welded bottoms.

The special construction technology gives the FILTERONE high mechanical resistance even at high temperatures, high chemical compatibility and total absence of transfer of particles and extractables.

The FilterONE cartridge can be regenerated with solvents and ultrasounds.

Filter Grades Available

0.5; 1.0; 3.0; 5.0 microns

Nominal Dimensions

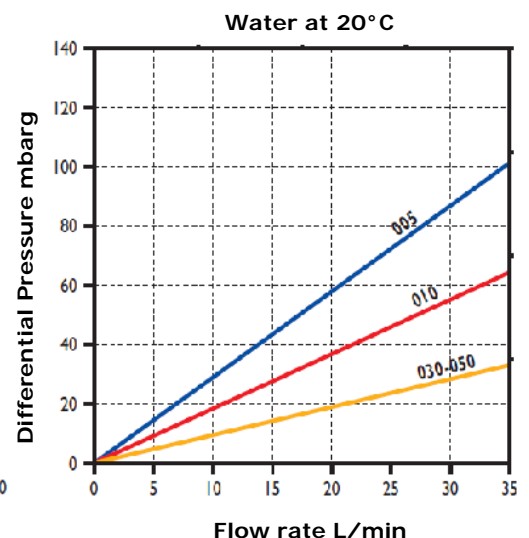
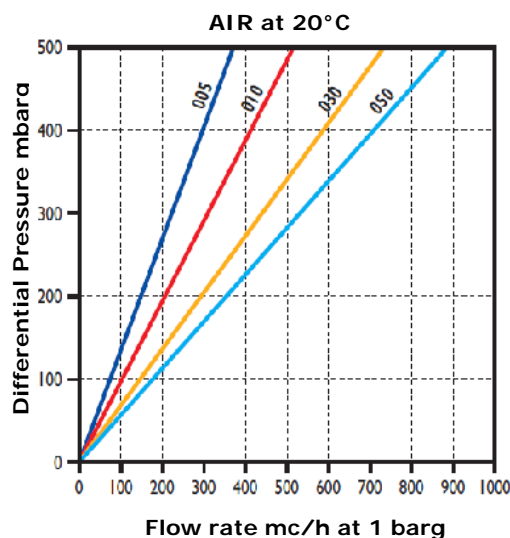
10 - 20 - 30 - 40 inches in the classic configuration

Adapters

Available with the most popular terminals (see ordering information)

Flow vs. Differential Pressure

The flow pressure drop refer to air (1 barg) or water at 20 °C , for a 10" cartridge.



Specifications

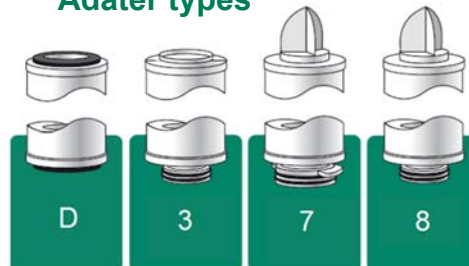
<i>Materials of Costruction</i>		<i>Cartridges Cleaning</i>	
Filter media	AISI 316L mesh	With solvents and/or ultrasounds	
Support layers armor	AISI316L	Backwashing	
<i>Operating Parameters</i>		<i>Sterilization</i>	
Maximum operating temperature	150°C continuously	Steam	Up to 130°C per 30 minuti
Maximum differential pressure	16 bar at 370C		
Forward direction	3,4 bar at 370°C		
<i>Cartridges Nominal Length</i>		<i>Integrity Testing</i>	
<i>Standard</i> Lenght: 250, 500, 750, 1000 mm, Diameter. 64 mm		NON APPLICABILE AI FILTRI NON A MEMBRANA	

Housing Information

A full selection of standard industrial housings are available for FILTERONE elements. Custom designed housings for specific applications are also available.

ORDERING INFORMATION

Adater types



ONE	7	10	005	S
Product identificatio	Adapter	Length	Filtration Rating	Gaskets o-rings
	D = DOE (double open end) 3 = OR222/without fin 7 = OR226/2 bayonet with fin 8 = OR222/ with fin	10=10" 20=20" 30=30" 40=40"	005 = 0,5 µm 010 = 1,0 µm 030 = 3,0 µm 050 = 5,0 µm	E = EPDM S = Silicone V = FPM X = FEP

IPM s.r.l. - Sistemi di filtrazione - Via Madre Teresa, 22 - 20851 Lissone (MB) - Italy

IPM si riserva il diritto di modificare qualsiasi caratteristica del prodotto per ragioni tecniche e per offrire ai clienti la migliore tecnologia. Per chiarimenti contattare IPM.

Documento n° DSFONEEN001/21printed in Italia 09/2021

Per ordini e richieste di informazioni
E-mail: ipm@ipmfilters.com
Tel. +39 0392145244
Fax. +39 0392145245

Sito web www.ipmfilters.com

IPM
SISTEMI DI FILTRAZIONE