

FilterTEF

PRODUCT INFORMATION

The FilterTEF filter cartridge has been developed and optimized for filtration of high-purity air and liquids to assure end product purity and biological stability.

FilterTEF is inherently hydrophobic and contains no added surfactants or wetting agents.

FilterTEF has a great performances derives from the use of PTFE (Polytetrafluoroethylene)membrane, with a narrow pore size distribution.

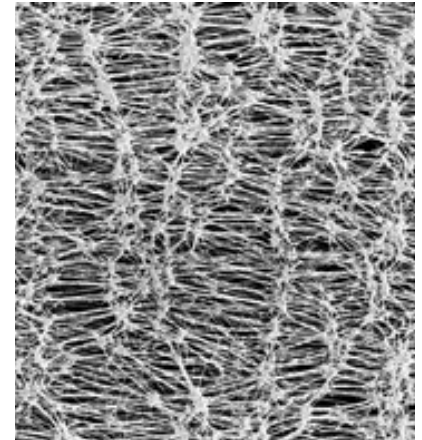
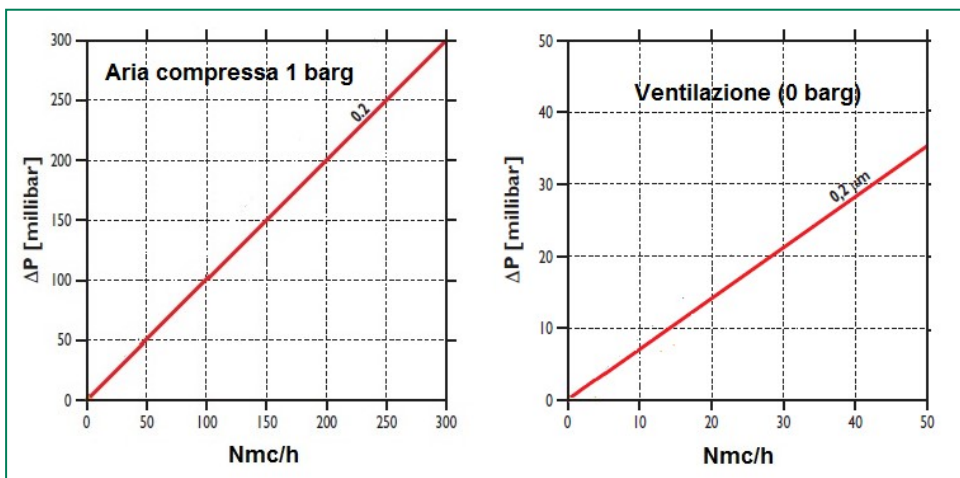
This membrane produces a cartridge with high flow rates, long on stream life, and consistent removal of microorganism and inorganic particulates.

The FilterTEF is available with a filtration rate of 0.2 μm

The filterTEF membrane is biologically inert, having low protein binding

Typical Gas Flow vs. Differential Pressure

air at 20°C per 10" module



FilterTEF: Electron microscope photography

QUALITY STANDARDS

- ⇒ Designed, developed and manufactured in accordance with an ISO 9001 certified Quality Management System
- ⇒ Fully validated as sterilizing-grade filters according to current ASTM F-838 guidelines
- ⇒ Each individual element is tested for integrity by Bubble Point and Diffusion test

BIO-SAFETY STANDARDS

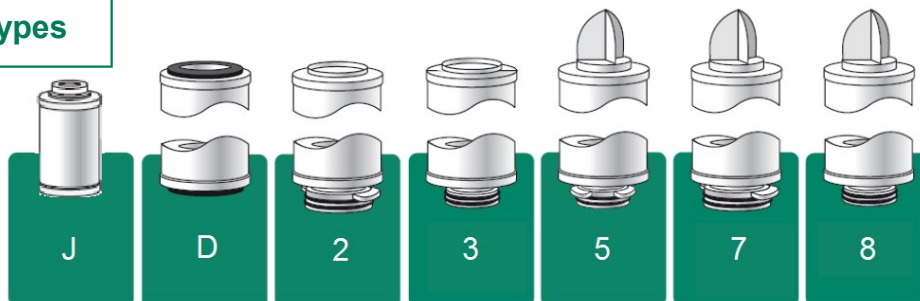
- ⇒ Non-pyrogenic according to USP<85> Bacterial Endotoxins
- ⇒ Pass USP Plastic Class VI Test Non-fiber releasing according to 21 CFR

Specifications

Materials of Costruction		Microbial Removal Efficiency	
Filter Membrane	PTFE	0,2 µm	<i>Brevundimonas diminuta</i> TR>10 ⁷ /cm ²
Support and drainage layers	polypropylene		
Cage	polypropylene		
Adapter ilnsert	AISI316L		
Operating Parameters		Sterilization	
Maximum operating temperature	Up to 70°C	Steam/autoclave	Up to 130 °C per 30 minuties
Maximum differential pressure	5,0 barg at 24°C		
Forward direction	1,8 barg at 50°C		
Nominal Dimentions		Integrity Test Values	
<i>Junior</i> Length: 62 and 125 mm, Diameter: 56 mm		The specification values for the different filtration rates are shown in the instructions for use attached to the cartridge packaging	
<i>Standard</i> Length: 250, 500, 750, 1000 mm, Diameter. 70 mm			

ORDERING INFORMATION

Adater types



TEF	7	10	002	S	I	PH
Product identification	Adapter	Length	Filtration Rating	Gaskets o-rings	Insert	Version
TEF	D = DOE (double open end) 2 = OR226/2 bayonet without fin 3 = OR222/without fin 5 = OR222/ 3 bayonet s with fin 7 = OR226/2 bayonet with fin 8 = OR222/ with fin	10=10" 20=20" 30=30" 40=40"	002 = 0,2 µm	E = EPDM S = Silicone V = FPM X = FEP	I = with (*) 0 = without (*) When filter has to be sterilized by steam	PH = Pharma version
	J = JUNIOR	05=5.0"				

IPM s.r.l. - Sistemi di filtrazione - Via Madre Teresa, 22 - 20851 Lissone (MB) - Italy

IPM reserves the right to modify any product feature for technical reasons and to offer customers the best technology. For clarification please contact IPM.

For orders and requests for information
E-mail: ipm@ipmfilters.com
Tel. +39 0392145244
Fax. +39 0392145245

Document n° DSNYFEN001/21 issued in Italy 09/2021

Web site www.ipmfilters.com

IPM
SISTEMI DI FILTRAZIONE